

**JANUARY  
2009**

"Were not our hearts burning within us while he talked with us on the road and opened the Scriptures to us?"

--Luke 24:32,  
NIV

**Inside This Edition:**

2009 Walk Information	2
Community Gatherings & 4 <sup>th</sup> Day Community Servanthood Opportunities	3
Newest Fourth Day Members	4
Emmaus Team Service	5
2009 Board Members & General Information	6

# Pilgrim's Journey



The Official Newsletter of the Houston North Emmaus Community

In Revelation 21:5a are the words, "And he who sat upon the throne said, 'Behold, I make all things new.' "

This is certainly true at the beginning of each and every year in the Houston North Emmaus Community. All things are being made new for 2009! We have...

Prayed.

Planned.

Installed the newly-elected Board members.

Shuffled the Board members' duties around a bit.

Scheduled the 2009 Walks.

Then re-numbered the 2009 Walks after having to cancel the men's Walk originally scheduled for January.

Secured most of our 2009 Walk leadership.

Begun recruiting our Fourth Day members for Walk support via community servanthood.

Scheduled the 2009 community gatherings.

Begun the team selection process for the April Walks.

The U.S. economy is in a slump. Some are still recovering from Hurricane Ike..some may NEVER recover from Ike. Some are suffering illness. Some are grieving the loss of loved ones.

And YET...God is still on the throne! His kingdom work is still going strong! In situations like these, what a great time to share the Emmaus experience with someone you know and love via sponsorship, or to participate in a Walk in the many ways available to the Fourth Day!

**DE COLORES!**

## HNEC Walk Registration

**Questions:**  
[registrar@h nec.org](mailto:registrar@h nec.org)

**Forms:**  
[www.h nec.org](http://www.h nec.org) >  
**"2009 Forms/Apps" button**  
\*\*\*\*\*

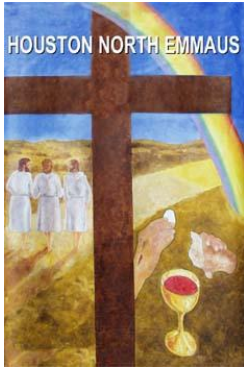
**Check the web for latest info.**  
[www.h nec.org](http://www.h nec.org)

## HOUSTON CHRYSALIS 2009 FLOURNEYS

**Girls #89 – July 9-12**  
**Boys #90 – July 16-19**  
**Girls #91 – July 23-26**  
**Boys #92 – July 30-Aug 2**

Flourneys are for both college and high school students. Caterpillars (participants) must have completed their 9<sup>th</sup> grade year. Weekend costs for 2009 are \$150.00 per caterpillar and team member. Full and partial scholarships are available. Just email or call the registrar. Full info at:

[www.houstonchrysaliscommunity.com](http://www.houstonchrysaliscommunity.com)



## 2009 Walks – Houston North Emmaus Community

All HNEC Walks will be held at Kaiserhof Lutheran Retreat Center, 22610 Tuwa Road, Tomball, Texas. Go to [www.kaiserhofretreatcenter.com](http://www.kaiserhofretreatcenter.com) for location / directions.

All OFFICIAL 2009 Walk forms are available for download at: [www.hnec.org/Current\\_applications.htm](http://www.hnec.org/Current_applications.htm)

Sponsors should send the completed pilgrim application, the completed sponsor form, and \$155 payment for Walk fees to:

Houston North Emmaus Community, Inc.  
 ATTN: Jim Garland, Registrar  
 2257 North Loop 336 West, #140-331  
 Conroe, TX 77304.

### WOMEN'S WALK 50. April 16-19.

Janie Gulley, Lay Director. Mary Nell Benson, Servant Team Coordinator (STC). Rev. Debbie Drost, Spiritual Director. Lindsey Robertson, Board Rep.

### MEN'S WALK 51. April 23-26.

Robert Kent, Lay Director. Bill Maloney, STC. Rev. Larry Smith, Spiritual Director. Kevin Kyle, Board Rep.

### WOMEN'S WALK 52. July 30-August 2.

Stephanie Brassovan, Lay Director. Sarah Moore, STC. Rhonda Fronk, Board Rep.

### MEN'S WALK 53. October 8-11.

Chuck Abernathy, Lay Director. Morris Davidson, STC.

### WOMEN'S WALK 54. October 15-18.

Susan Kent, Lay Director. Laurie Starkey, Board Rep.

"What is the Walk to Emmaus?" I asked a friend.

"Well, it's O-O-O-nly the BEST THREE DAYS of your ENTIRE LIFE!" he replied.

Three days.

Life's "watershed" moment.

Three days, before which everything seems gray and colorless in comparison, and after which nothing can ever be the same.

## 2009 Walks - Other Houston Area Communities

HOUSTON WEST  
 EMMAUS COMMUNITY  
[www.hwec.org](http://www.hwec.org)

51 (Men). Mar 19-22.  
 52 (Women). Mar 26-29.  
 53 (Men). Sep 24-27.  
 54 (Women). Oct 1-4.

Kaiserhof Lutheran  
 Retreat Center, Tomball,  
 TX.

CRADLE OF TEXAS  
 EMMAUS COMMUNITY  
[www.geocities.com/cotemmaus](http://www.geocities.com/cotemmaus)

40 (Men). Mar 12-15.  
 41 (Women). Mar 26-29.  
 42 (Women). Jul 16-19.  
 43 (Men). Sep 10-13.  
 44 (Women). Sep 17-20.

Tx Baptist Encampment;  
 or The Lodge At Danbury.

HOUSTON BAY AREA  
 EMMAUS COMMUNITY  
[www.hbaec.org](http://www.hbaec.org)

48 (Men). Apr 16-19.  
 49 (Women). Apr 23-26.  
 50 (Men). Oct 22-25.  
 51 (Women). Nov 5-8.

The Lodge at Danbury,  
 Danbury, TX.



## 2009 COMMUNITY SERVANTHOOD OPPORTUNITIES

For each Walk, there are up to 8 tasks that are provided by the HNEC Fourth Day Community. Below are the items that are open and available as of late January for each Walk. To serve in any area, contact Sara Farris or John Follis with the number of people serving and their affiliation (individual, reunion group, or church community). **A complete description of the various servanthood opportunities can be accessed on the web at [www.hnec.org/Community Servanthood/comm\\_servanthood.htm](http://www.hnec.org/Community_Servanthood/comm_servanthood.htm).**

<u>Walk #</u>	<u>Walk Dates</u>	<u>Open Opportunities</u>
50 (Women)	Apr 16-19	Thursday Moving; Thursday Snack Supper; Saturday Agape Dinner; Saturday Parking Attendants; Saturday Candlelight Service
51 (Men)	Apr 23-26	Thursday Snack Supper; Saturday Luminaries; Saturday Candlelight Service
52 (Women)	Jul 30-Aug 2	Thursday Moving; Thursday Snack Supper; Saturday Parking Attendants; Saturday Candlelight Service; Sunday Roses; Sunday Moving
53 (Men)	Oct 8-11	Thursday Snack Supper; Saturday Parking Attendants; Saturday Luminaries; Saturday Candlelight Service
54 (Women)	Oct 15-18	Saturday Agape Dinner; Saturday Parking Attendants; Saturday Luminaries; Saturday Candlelight Service; Sunday Roses; Sunday Moving

**SARA FARRIS:** [sarafarris80@hotmail.com](mailto:sarafarris80@hotmail.com)

**JOHN FOLLIS:** [johnfollis@att.net](mailto:johnfollis@att.net)



## 2009 HNEC COMMUNITY GATHERINGS

**SATURDAY, FEBRUARY 21<sup>ST</sup>**

Lake Houston UMC. [www.lakehoustonumc.com/](http://www.lakehoustonumc.com/)

**SATURDAY, MAY 9<sup>TH</sup>** (preceded by Walk follow-up meetings)

The Woodlands UMC. [www.twumc.org/](http://www.twumc.org/)

**SATURDAY, NOVEMBER 7<sup>TH</sup>** (preceded by Walk follow-up meetings)

Kingwood UMC. [www.kingwoodumc.org](http://www.kingwoodumc.org)

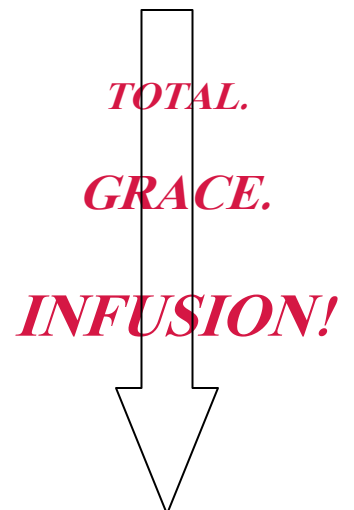
GENERAL SCHEDULE:

4:00-5:00 Walk Follow-Ups (if applicable)

5:00-5:30 Sponsorship Orientation

5:30-8:00 Meal and Gathering (Worship, speaker, communion)

The Walk to Emmaus is a...



## WELCOME OUR NEWEST FOURTH DAY MEMBERS!

### WOMEN'S WALK 47. JULY 17-20, 2008.

Elizebeth Ackley, Roxie Allen, Farrah Anderson, Alma Bigler, Kacy Blan, Eileen Booher, Ali Cotten, Patty Davis, Lois Decker, Stephanie Dement, Jill Eddings, Alycia Fisher, Angela Fisher, Myrna Gardner, Penny Giddings, Mary Gordon, Patty Hooper, Lindsay Herrera, Joyce Hoover, Supriya Joshi, Mary Beth Joslyn, Terry Loughridge, Cassie Neitzey, Katie Newman, Genie Pearce, Tina Plank, Jamie Primrose, Beth Rainey, Fiona Sanchez, Carolyn Severson, Rita Thomason, Vivian Villarreal, and Jean Wallace.

### MEN'S WALK 48. OCTOBER 9-12, 2008.

Terry Alexander, Walter Balderach, Terry Brumley, Bill Carroll, Tom Comstock, Larry Dean, Marc Flach, Lynn Fletcher, Wendell Gilbert, Michael Grandstaff, Greg Harris, Eric Hird, John Hoyt, Edgar Hubbard, Frank Jackson, Tom LaRock, Aaron Lindsey, Glen Malone, William Mendel, Tom Miessler, Jason Bleau, George Neitzey, Richard Newman, Wayne Norman, Daniel Ojeda, Paul Oliver, Dan Pearce, Bob Planos, Ross Primm, Billy Riggs, John Robuck, Brad Schreiner, Darrel Sutton, Billy Ward, Blaik Wisenbaker, and Paul Wunsche.

### WOMEN'S WALK 49. OCTOBER 16-19, 2008

Trish Bilbo, Sonya Bleau, Jennifer Brumley, Donna Capaletti, Karla Carter, Rosie Craig, Debbie Dean, Lisa Donoho, Barbara Hall, Phyllis Hawkins, Jeannie Hengst, Yolanda Koonce, Sara Laws, Sharon Lee, Donna Lockwood, Dobbi Lunday, Tamara Mayne, Jan McAllaster, Marilyn Mendel, Jane Milligan, Claire Morgan, Patricia Morris, Kelli Myers, Jill Oliver, Vicki Phillips, Beverly Puckett, Rhonda Robinson, Carmina Robuck, Lynell Ross, Diana Rutherford, Carol Seale, Becky Sharp, Sadie Teters, and Debbie Welch.

**ALL WALK PHOTOS ARE POSTED ON THE WEBSITE. GO TO THE SITE BELOW AND FIND THE WALK OF YOUR CHOICE. YEAH...LIKE SHE'S DOING!**

**[www.hnec.org/Walk%20Pages/walk\\_archives.htm](http://www.hnec.org/Walk%20Pages/walk_archives.htm)**

#### RELATED WEBSITES

**EMMAUS ADMIN:**  
THE UPPER ROOM  
[www.upperroom.org](http://www.upperroom.org)

**INTERNAT'L EMMAUS**  
[www.upperroom.org/emmaus](http://www.upperroom.org/emmaus)

#### STUFF!

[www.decolores.com](http://www.decolores.com)  
[www.doveinc.com](http://www.doveinc.com)  
[www.singstherooster.com](http://www.singstherooster.com)



## EMMAUS TEAM SERVICE

### POSITION

### WOMEN'S WALK 47 JULY 2008

### MEN'S WALK 48 OCTOBER 2008

### WOMEN'S WALK 49 OCTOBER 2008

LAY DIRECTOR (LD)  
SERVANT TEAM COORDINATOR (STC)  
ASS'T LAY DIRECTORS (ALDs)

Rhonda Fronk  
Margaret Vozar

Tom Wanamaker  
Terry Bratton

Leslie Townsend  
Tami Laugharn

SPIRITUAL DIRECTOR (SD)  
ASS'T SPIRITUAL DIRECTOR (ASD)  
BOARD REPRESENTATIVE (BR)  
HEAD MUSICIAN (HM)  
MUSICIANS (MS)

Tami Denton, Lynda Jackson, Sylvia Wiseman  
Rev. Pam Jackson  
Rev. Janet Stilwell  
Lyndal Davis  
Nancy Lawshae  
Carolyn Entricht, Lisa Newburn

Earl Dague, Ray Freeman, LeRoy Fronk  
Rev. Greg Smith  
Rev. Larry Smith  
Carl Spaeth  
Ron DonLevy  
Ken Gau, Joel Knox

Nina David, Glenda Hudson, Debbie Parcel  
Rev. Kathy Kershaw  
Rev. Debbie Drost  
Beth Roberts  
Lorrie Beasley  
Danelle Knox

TABLE LEADERS (TL)

Kathy Reedy (Head), Janet Akery, Vicky Dimmitt, Paula Dennis, Susan Fronk, Tami Mirasola

Denny Wiseman (Head), Will Cunningham, John Follis, David Marshall, Kevin Mirasola, Paul Silva

Shirley Smith (Head), Taani Follis, Jean Goodwin, Nancy Steinmeier, Jan Watters, Corey Worthen

ASS'T TABLE LEADERS (ATLs)

Linda Ferguson, Jackie Forbes, Sue Grawl, Kristin Jackson, Natasha Krueger, Phyllis Palmer

Tim Ben-Schoter, Jonathan Breazeale, Kevin Krueger, Brett Marko, Mike O'Shea, Kevin Rowe

Dianna Condron, Nancy Cook, Joni Fife, Shirley Keeney, Henri Kennedy, Janine Spiller

HEAD AGAPE SERVANT (HA)  
HEAD KITCHEN SERVANT (HK)  
HEAD CHAPEL SERVANT (HC)

Carolyn Dickerson  
Annette Smith  
Kathy Paterson

Doug Spitz  
John Smith  
Arch Kennedy

Deanna Gau  
Sandi Heintz  
Judi Kenyon

AGAPE SERVANTS (AS)

Teresa Gary, Noreen Kennedy, Ruth Kluetz, Beth Whittier

Jason Blackshear, Chris Hanz, Troy Schleicher

Terry Amos, Stacy Amszi, Paige Mixon

KITCHEN SERVANTS (KS)

Shirin Parke, Vicki Pruitt, Sharon Rich

Gary Cook, Hal Heald, Matt Swanson

Sharon Heald, Shirley Hickman, Lindsey Robertson, Tammie Walterbach

CHAPEL SERVANTS (CS)  
VISITING CLERGY (VC)

Kathy Collins  
Rev. Susan Gritman, Rev. Larry Smith, Rev. Patty Wehn-Glowski

Tibor Cseszko  
Rev. David Davenport, Rev. Jessica LaGrone

JoAnn Maddock  
Rev. Patty Bergfield, Rev. Sam Jones, Rev. Jessica LaGrone

DAY SERVANTS



Gail Alston, Cheri Blocker, Susan Carson, Cindy Cooke, Connie Dyess, Mary Feece, Karen Greco, Tamara Harrod, Shirley Hickman, Marcie Huckabee, Judi Kenyon, Don Maxfield, Janet Smith, Cheree Taylor, Jan Willis, Joleen Wright, Carolyn Yockey

Berry Anderson, John Benes, Gary Combs, Mitch Mattingly

Dona Angell, Connie Barker, Jennifer Breazeale, Diane Byrne, Judy Chandler, Janet Galengar, Elaine Russell



TEAM SERVICE is a GREAT way to be involved with Emmaus. If you have never served on a team, or even if you have, pray to see if the Lord is calling you to serve the 2009 pilgrims in this way. Teams are selected by a committee consisting of two HNEC Board members and six Fourth Day members, with equal male and female representation. **If you would like to be considered for weekend team service, send an email to either Purvis Harper ([p Harper5@embarqmail.com](mailto:p Harper5@embarqmail.com)) or Beth Roberts ([beth\\_roberts@huntsman.com](mailto:beth_roberts@huntsman.com)). Let them know of your availability.**

# HNEC 2009 Board of Directors

Community Chair	Tom Wanamaker	281.367.7943 tkwanamaker@sbcglobal.net
Ass't Community Chair	LeRoy Fronk	936.449.5194
Past Community Chair **	Susan Kent	281.360.2886
Secretary	Carlene Jackson	281.350.3078
Treasurer	Lyndal Davis	936.441.9795
Spiritual Director	Rev. Patty Wehn-Glowski	281.356.3665
Past Spiritual Director	Rev. Larry Smith	936.653.2288
Agape (Internal/External)	Lindsey Robertson	713.447.9962
Books, Manuals & Documents Manager	Morris Davidson	936.449.4326
Community Development	Kevin Kyle Laurie Starkey	281.970.0814 281.288.4028
Community Servanthood	Sara Farris John Follis	281.467.1337 281.255.3095
Gatherings/Reunion Groups	Sarah Moore	832.401.6295
Kitchen Coordinators	Lynda Jackson Debbie Zemanek	713.686.5949 936.672.0214
Property	Chuck Abernathy Kirk Smith	936.449.6450 281.379.5993
Team Selection & Nominations	Purvis Harper Beth Roberts	281.359.5535 936.588.2401
Training	Jeff Reinhart	281.537.0439
Database Administrator **	Anita Worthington	936.377.2435
Music **	Debbie Parcel	281.894.6344
Communications (Web and Newsletter) **	Rhonda Fronk	281.345.0761 communications@h nec.org
Registrar **	Jim Garland	713.240.4458

\*\* Denotes non-voting member.

Please send all Walk applications and written correspondence to:

**HOUSTON NORTH EMMAUS COMMUNITY, INC.**  
2257 North Loop 336 West,  
#140-331  
Conroe, TX 77304

The *Pilgrim's Journey* newsletter is published in electronic form four times a year.

To be added to the newsletter e-list, send an email with your request to:

[communications@h nec.org](mailto:communications@h nec.org)

We're on the Web!

See us at:

[www.h nec.org](http://www.h nec.org)

## 2009 Board Meeting Dates

HNEC Board meetings are held on the second Tuesday of each month at either Kaiserhof Lutheran Retreat Center or The Woodlands United Methodist Church on an alternating basis. (Check the website prior to each meeting for that month's location.)

February 10  
March 10  
April 14

May 12  
June 9  
July 14

August 11  
September 8  
October 13

November 10  
December 8

All meetings start at 7:00 pm and are open to any Fourth Day who might wish to attend. Meeting agendas are set in advance, so anyone wishing to have a specific item placed on the agenda or with a desire to address the Board during a meeting should contact Tom Wanamaker, Community Chair (see contact information above) at least 48 hours in advance of the meeting.